



Sustainable KTU

SUSTAINABILITY REPORT 2025

5 GENDER
EQUALITY



www.ktu.edu.tr/sustainability



surdurulebilirktu@ktu.edu.tr



CONTENT

| | |
|---------------------------------|---|
| Rector's Message..... | 2 |
| Foreword..... | 3 |
| Institutional Structure..... | 4 |
| 2025 Events and Activities..... | 5 |



Sustainability is one of the most important areas of responsibility shaping our future through its environmental, economic, and social dimensions. Universities are not only institutions that produce knowledge, but also pioneering structures that guide sustainable development and contribute to social transformation.

In line with the United Nations Sustainable Development Goals (SDGs), the development objectives of our country, and the vision of sustainability in higher education, we, as Karadeniz Technical University, place sustainability at the core of our education, research, social contribution, and institutional governance processes.

Throughout 2025, our university carried out significant initiatives in many areas, including quality education, climate action, energy efficiency, scientific research, social inclusion, and regional development. Through projects focused on scientific knowledge production and societal contribution, we continued to support the achievement of sustainable development goals.

This report presents our university's activities in the field of sustainability and our commitment to the future. Guided by science and in collaboration with our stakeholders, we believe that we will continue working towards a more sustainable future.

Prof. Dr. Hamdullah ÇUVALCI

Rector, Karadeniz Technical University





Gender Equality, as one of the fundamental components of sustainable development, aims to ensure that individuals have equal rights, opportunities, and representation in all areas of social life. In 2026, Karadeniz Technical University (KTÜ) considered gender equality as an essential component of its institutional structure and carried out various activities aimed at expanding equality-based practices, increasing awareness, and strengthening monitoring processes.

KTÜ continues to reinforce an inclusive and equality-oriented approach within its academic and administrative processes. Through policy documents, educational activities, and implementation mechanisms developed within the university, efforts are made to prevent gender-based discrimination, support equal opportunities, and foster an inclusive university culture. This approach supports the integration of gender equality into education, research, and community engagement processes.

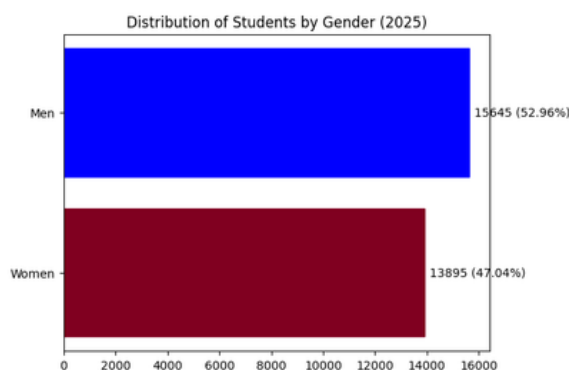
Research activities, social responsibility projects, and awareness events carried out within the university contribute to the development of equality awareness among students, academic staff, and administrative personnel. In particular, initiatives aimed at increasing women's visibility in academic production, decision-making processes, and social life strengthen the university's inclusive structure.

This report aims to present the activities, implementation examples, and areas for development carried out by KTÜ within the scope of SDG 5. At the same time, the report provides an overall evaluation of the university's institutional approach toward creating a more just, inclusive, and sustainable academic environment.



Student Profile and Gender Equality

Karadeniz Technical University (KTÜ) adopts equal opportunity in education as a fundamental principle and provides an inclusive learning environment that supports equal access to higher education for both female and male students. The University approaches gender equality not only in terms of access but also as a measurable and sustainable objective integrated across all stages of the educational process. In this context, the policies and practices developed include the regular monitoring and evaluation of gender-based indicators related to the student profile. The relatively balanced distribution of female and male students in undergraduate and graduate programs demonstrates KTÜ's commitment to inclusivity in education. Although variations exist across faculties and programs, efforts are ongoing to increase the representation of female students, particularly in engineering and technical fields, while women continue to have a strong presence in health sciences, natural sciences, and social sciences. This trend indicates positive progress toward achieving field-based gender balance. Female students contribute significantly to university life not only in terms of numbers but also through their academic achievements, active participation in student clubs, research projects, and engagement in national and international platforms. KTÜ implements scholarships, mentoring, and awareness programs to encourage women's participation in science, technology, engineering, and mathematics (STEM) fields, while also supporting initiatives aimed at developing leadership skills. In this regard, KTÜ evaluates gender equality not merely as a numerical balance, but as a key indicator of an inclusive, supportive, and equitable learning ecosystem.

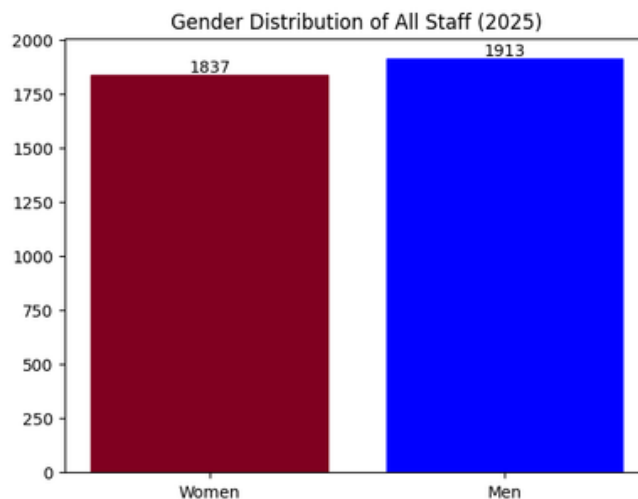




Gender Balance in All Staff

Karadeniz Technical University (KTÜ) considers ensuring gender equality within its academic staff as one of the fundamental components of scientific productivity and institutional inclusiveness. At the university, female and male academics serve across various faculties and academic ranks; women constitute approximately 40% of the overall academic staff. In addition, when considering the entire personnel structure of the university, women represent 48.99% of all employees, indicating a balanced gender distribution at the institutional level. These figures are in line with the national higher education average in Türkiye, and demonstrate a steady increase in female representation across many faculties.

While the representation of female academics is relatively higher in fields such as health sciences, natural sciences, and social sciences, efforts are ongoing to increase the proportion of women in engineering and technical faculties. Through its initiatives aimed at strengthening equal opportunities, KTÜ contributes to reducing gender-based barriers in academic life and regards the empowerment of female academics as an institutional responsibility. In this context, strategic approaches are being developed to enhance women's representation, particularly in decision-making mechanisms and academic promotion processes.





KTU Women and Family Studies Application and Research Center (KAÇAUM)

The Women and Family Studies Application and Research Center (KAÇAUM), operating within Karadeniz Technical University (KTÜ), conducts research on gender equality, women's rights, family structure, and social justice, while also aiming to raise awareness and develop solution-oriented projects. The Center plays an active role in reducing gender-based inequalities both within the university community and at regional and national levels, directly contributing to the achievement of Gender Equality (SDG 5) through its activities.

As of 2026, a Gender Equality Action Plan has been developed and implemented at KTÜ in order to strengthen gender equality at the institutional level. Within the framework of this plan, KAÇAUM assumes a coordinating role in the development, implementation, and monitoring of equality-oriented policies across the university. The action plan defines concrete objectives in the areas of education, research, governance, and social impact, and establishes indicators to monitor progress toward these goals.

The main activities carried out by KAÇAUM include:

- Organizing trainings, seminars, and workshops to raise awareness on gender equality,
- Conducting academic and social activities on women's health, family communication, prevention of violence, and women's participation in decision-making processes,
- Developing and implementing projects through national and international collaborations,
- Providing counseling and support services tailored to the needs of female academics, students, and administrative staff,
- Offering institutional guidance and conducting monitoring activities to ensure the integration of a gender equality perspective into university policies.

Through KAÇAUM, KTÜ aims not only to support women's empowerment but also to embed gender equality as an integral part of its institutional culture. In this regard, the university adopts a measurable and impact-oriented approach that contributes to sustainable development.



Toplumsal Hayatta Şiddetle Mücadelede Polisin Rolü Paneli

Konuşmacılar:

Toplumsal Şiddetin Psikolojik ve Sosyal Boyutu
Karadeniz Teknik Üniversitesi Psikoloji Bölümü
Dr. Öğretim Üyesi ve Kadın ve Aile Çalışmaları Uygulama ve Araştırma Merkezi Yönetim Kurulu Üyesi **GÜLEYYAN AKGÖZ AKTAŞ** (Moderatör)

Kadına Yönelik Şiddetle Mücadele ve ŞÖNİM Hizmetleri
Trabzon Aile ve Sosyal Hizmetler İl Müdürlüğü
Trabzon Şiddet Önleme ve İzleme Merkezi
Sosyal Hizmet Uzmanı **HANDE HACISALİHOĞLU**

Aile İçi Şiddetin Önlenmesinde Polisin Yeri

Events and Activities

Karadeniz Technical University (KTÜ) organized a series of activities throughout 2025 aimed at raising awareness on gender equality and combating violence, while also strengthening inter-institutional collaboration. These initiatives reflect the university's multi-stakeholder and impact-oriented approach in line with the SDG-5 Gender Equality goal:

- The panel titled "The Role of Police in Combating Violence in Social Life," held on May 28, 2025, addressed the phenomenon of violence from psychological, social, and institutional perspectives, with a particular focus on enhancing the professional awareness of police trainees.
- Within the scope of November 25 International Day for the Elimination of Violence against Women, the panel "A Shared Responsibility from Academia to Society in Combating Violence against Women" examined violence from psychological, legal, sociological, and digital dimensions, emphasizing the importance of preventive mechanisms and raising social awareness.
- The "Breast Health Awareness Panel and Walk" contributed to increasing awareness of women's health, highlighting the importance of early detection through scientific content and personal experience sharing.

These activities demonstrate KTÜ's holistic approach, which transforms academic knowledge into societal benefit.

Other Activities

01 Nisan

TOPLUMSAL ŞİDDET İLE MÜCADELE - KADINA YÖNELİK ŞİDDET

P A N E L

- **Kadına Yönelik Şiddette Görünmeyi Okumak: Eail Dinamikleri ve Müdahale Anları**
Dr. Öğr. Üyesi Güleycan AKGÖZ
Karadeniz Teknik Üniversitesi
Psikoloji Bölümü
KTÜ KAÇALIM Yönetim Kurulu Üyesi
(Moderatör)
- **Aile İçi Şiddetin Önlenmesinde Polisin Yeri**
Polis Memuru Talip YAZICI
Ortahisar İlçe Emniyet Müdürlüğü
Aile İçi ve Kadına Karşı Şiddetle Mücadele Büro Amirliği
- **Kadına Yönelik Şiddetle Mücadelede Aile ve Sosyal Hizmetler Bakanlığının Rolü**
Psikolog Ezgi HASANÇEBİ
Ortahisar Sosyal Hizmet Merkezi Müdürlüğü
Kadın İrtibat Noktası

1 NISAN 2025 ÇARŞAMBA, SAAT 14.00
TRABZON ŞEHİR MERIC ALEMDAR PÖMEM KONFERANS SALONU

Toplumsal Şiddet İle Mücadele

05 Mayıs Değişen Dünyada Aile: Roller, Sınırlar ve Bağlılık

AKADEMİKA

"Değişen Dünyada Aile: Roller, Sınırlar ve Bağlılık"

Arş. Gör. Dr. Özge Nur MUSLU
KTÜ Edebiyat Fakültesi
Psikoloji Bölümü

5 Mayıs 2025
14.00

KTÜ RADYO/TV CANLI YAYIN
KTÜ Radyo 101.7 - ktu.edu.tr/radyotv - www.youtube.com/ktutv

29 Mayıs Toplumsal Bağlamda Ulus Ötesi Göçlerin Kadın ve Aile Üzerine Etkisi

AKADEMİKA

Toplumsal Bağlamda Ulus Ötesi Göçlerin Kadın ve Aile Üzerine Etkisi

Dr. Öğr. Üyesi Aysula KURT
KTÜ Edebiyat Fakültesi Sosyoloji Bölümü
KTÜ Kadın ve Aile Çalışmaları Uygulama ve Araştırma Merkezi
Yönetim Kurulu Üyesi

29 Mayıs 2025
14.00

KTÜ RADYO/TV CANLI YAYIN
KTÜ Radyo 101.7 - ktu.edu.tr/radyotv - www.youtube.com/ktutv

23 Ekim Doğanın Kadın Eliyle Dönüşümü

KTÜ BİLGİLENDİRİYOR

Doğanın Kadın Eliyle Dönüşümü

Dr. Öğr. Üyesi Bilge YILMAZ
KTÜ Orman Fakültesi
Orman Endüstri Mühendisliği Bölümü

23 Ekim | KTÜ Radyo/TV
14.00 Canlı Yayın

Radyo: KTÜ 101.7 • ktu.edu.tr/radyotv • www.youtube.com/ktutv





Academic Contributions

Karadeniz Technical University continues to produce high-quality academic work in the field of gender equality. According to 2025 data related to this development goal, a total of 40 academic outputs have been recorded. Among these outputs, 18 consist of research and review articles. In addition, there are 5 conference papers, 11 courses (5 at the undergraduate level and 6 at the graduate level), and 2 book chapters. Furthermore, invited talks by researchers, various publications, as well as symposia and panels are also included among other academic activities.

KTÜ considers gender equality as an indispensable component of its institutional structure and adopts a holistic approach in this field. The university carries out activities across a wide spectrum through academic units, research centers, student communities, and organized scientific and social events. In this context, strengthening the position of women in academia, the workforce, and social life is among the primary priorities. These efforts—led particularly by the Women and Family Studies Application and Research Center (KAÇAUM), along with relevant academic departments, awareness-raising activities, student clubs, and equality-oriented academic programs—contribute to supporting the Sustainable Development Goal 5 (SDG-5: Gender Equality) at local, national, and global levels. KTÜ continues to take determined steps toward building a more just, inclusive, and equitable university environment with the participation of all its stakeholders.



Academic Publications – 2025





Sustainable KTU

Prepared by

Asst. Prof. Gülaycan AKGÖZ
Res. Asst. PhD Seyhan SEYHAN

This publication has been prepared by KTU Office of
Research Coordination



www.ktu.edu.tr/sustainability



surdurulebilirktu@ktu.edu.tr