

# GRADUATION PROJECT DRAFT PAPER

Student Name and Surname    Student Name and Surname    Advisor Name and Surname  
*ogrenci1@ktu.edu.tr            ogrenci2@ktu.edu.tr            danisman@ktu.edu.tr*

Department of Electrical and Electronics Engineering  
Faculty of Engineering, Karadeniz Technical University, Trabzon

## Summary

The graduation projects completed by students in the Design Project and Graduation Project courses offered in the 7th and 8th semesters of the Department of Electrical and Electronics Engineering, Faculty of Engineering, Karadeniz Technical University, will be prepared as a paper and published collectively as a Graduation Project Proceedings Book in PDF format. The papers, which will be exhibited and presented during the last three days of the final exams at the end of the spring semester, will be included in this booklet. These papers will also be published as special issues in sector journals, if agreed upon. This document is a draft explaining how to prepare the papers. The maximum length of the paper is four pages.

## 1. Introduction

You can also access this sample on the department website. Please prepare the paper as an MS Word file following the format in this sample and submit it as a PDF file. Information on submission and evaluation procedures can be found at <<http://eee.ktu.edu.tr>>.

## 2. Page Layout and Format

Page layout must be prepared in accordance with the following guidelines. Using a pre-made template (Word, this template) or following a sample file to check the details is strongly recommended to meet these requirements.

### 2.1. Warning Regarding Author Names!

Author names should be written according to the example above, starting with the student name and then the advisor's name. If there are more than two students, they are listed sequentially. If necessary, continue on the second line. The order of the student names is determined by the advisor. The valid email address of each author is written on the line following the university name. The advisor is also the contact person for this paper. All communication outside the department is handled through the advisor after the department chair. The advisor will keep students named in the paper informed of developments.

## 2.2. Basic Layout Features

- Papers must be prepared in A4 format.
- The text must be in two columns, except for the title section and the use of page-wide figures.
- Left and right margins are 2 cm,
- Column spacing is 0.6 cm,
- All margins are 2.0 cm (top margin of the first page is 3 cm for the paper title),
- Page headers and footers must be left blank.
- Paragraphs must be indented, and a single line of space must be left between two consecutive paragraphs.
- The format of this file can be used as an example.

### 2.2.1. Headings

Section headings should be bold and aligned left. Only the first word in the heading should be capitalized, and the rest should be in lowercase, 12-point font. Subheadings should be written in the same format as the main headings, 11-point font. Subheadings below the subheadings should be written in the same format as the subheadings, but in italics, without bolding.

### 2.3. Font

Times or Times New Roman should be used for the main text. The recommended font size, as well as the minimum font size, is 10 points. Other fonts may be used in special cases. All fonts used in the final PDF file must be included.

### 2.4. Figures

All figures should be centered within the column (or the page if the figure spans two columns). Figure titles should be written below each figure and should follow the layout shown in Figures 1, 2, and 3. The font used in the figures and the text should be compatible and easy to read.

If figures contain dark or colored areas, they should be checked for proper printing on high-quality, color-safe laser printers.

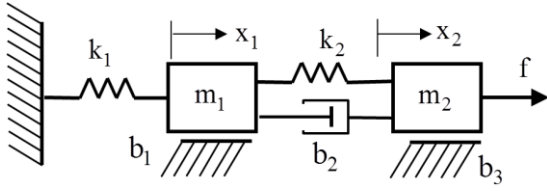


Figure 1: An example of a figure.

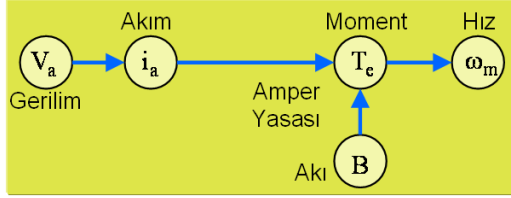


Figure 2: Another example of a figure.

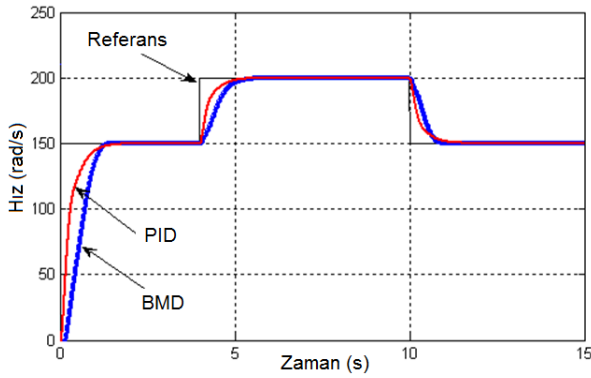


Figure 3: Another example of a figure.

## 2.5. Tables

An example is given in Table 1. Different tables can be used depending on the type and intended use. The table title should appear above the table, consistent with the example.

Tables 1: An example of a table

| Veritabanı | Eğitim | Test  |
|------------|--------|-------|
| BUPA       | 100    | 94,78 |
| E.coli     | 94,60  | 90,35 |
| Glass      | 98,67  | 95,31 |

## 2.6. Equations

Each equation should be written on a separate line and numbered. Some examples are given below. References to equations should be made with the equation number (1) in parentheses.

$$C_{SV} = 1 + \beta_T \alpha_S (S_x - S_C) \quad (1)$$

$$\delta_i^{(k+1)} = \delta_i^{(k)} + \alpha_b \Delta \delta_i^{(k)} \quad (2)$$

$$y(t) = \frac{1}{\alpha} \int_{t=0}^{\infty} x(t) e^{-at} dt \quad (3)$$

## 2.7. Hyperlinks

Hyperlinks may be used in the report. However, ensure that the hyperlinks you use will not cause problems after conversion to PDF format.

## 2.8. Adding Software

Bildiriye yazılım kodu yerine akış şeması eklenmelidir.

## 2.9. Page Numbers

Page numbers should be centered at the bottom of the page.

## 2.10. References

The format of the references is standard IEEE reference format. References should be numbered sequentially, for example, [1], [2], and [3]. References listed at the end of a line can be combined by specifying the starting and ending reference numbers. For example, instead of [1], [2], [3], [4], [5], they can be listed as [1-5]. The final reference list should be in 9-point font.

## 3. Submission of Papers

Papers must be submitted as PDF files via the "Graduation Project Submission" interface located under the "Graduation Project" subheading on the Department website. The department website can be accessed at <http://eee.ktu.edu.tr>. The form indicating the advisor's permission for the paper to be printed must also be approved, scanned, and combined with the paper file into a .rar or .zip file and submitted as a single file. The name of the submitted file must be the Project Number provided in the Graduation Project Submission Program. For example, to represent graduation project number 56, it should be named bit056.zip.

## 4. Results

Submissions from graduation projects that pass the preliminary evaluation must be submitted by the evening of the first day of the graduation project exhibition held at the end of each spring semester. Submissions not submitted on time or not in PDF format will not be considered.

To be included in the Proceedings Book, papers must be prepared in accordance with the formatting guidelines, and the graduation project must be deemed satisfactory by the examination jury. Additionally, a confirmation document from the graduation project advisor granting permission for the paper to be published must be scanned and submitted as described above. This approval form can be found on the Department website under the "Graduation Project" subheading.

The results and evaluations of your work can be presented under this heading. Each form of conclusion used must be cited and explained in the text. For information on writing the results, please refer to the Graduation Project Writing Guide.

## **5. Acknowledgements**

If you have received financial support from anyone during your research, you can thank them here. Family and friends should not be acknowledged here.

## **6. References**

- [1]. A1. Surname1 and A2. Surname2, "Article title", Journal published, Volume No., Page, Year.
- [2]. A. Surname, (Editor if any), Book title, Publisher, Place of publication, Year of publication.
- [3]. A1. Surname1, A2. Surname2 and A3. Surname3, "Paper title", Symposium or conference proceedings published, Year, Page.

Authors' first and middle names should be abbreviated, and their surnames should be written in full. Only the first letter of the surname should be capitalized. IEEE citation rules apply to references. Detailed instructions on how to write references are provided in the Dissertation Writing Guide, the most authoritative resource on this subject. This guide can be found under the "Dissertation" subheading on the department website.

## **7. Appendices**

Appendices, if any, are listed in this section. The spelling rules for appendices are the same as for the other parts of the paper. The paper, including appendices, should be a maximum of four pages.